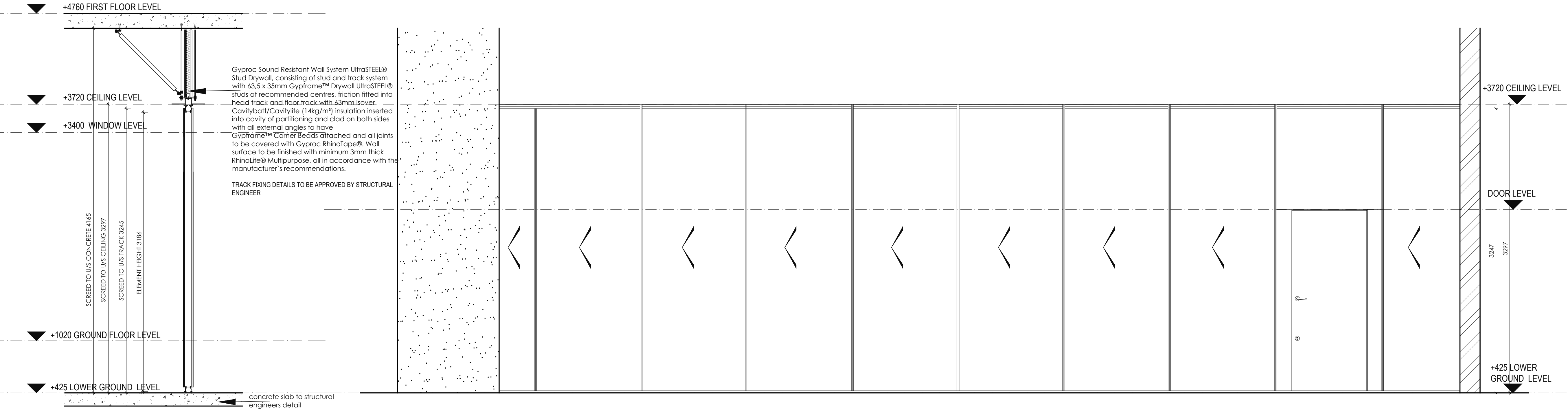


GYPROC INTERNAL WT-09 PLAN
SCALE 1:25



GYPROC INTERNAL WT-09 DETAIL
SCALE 1:25

GYPROC INTERNAL WT-09 ELEVATION
1:25

- GENERAL NOTES:
1. NO DIMENSIONS TO BE SCALED.
 2. DIMENSIONS TO BE VERIFIED ON SITE BEFORE COMMENCING ANY SITE WORK OR SHOP DRAWINGS.
 3. DIMENSIONS ARE TAKEN TO CENTRE LINES OR STRUCTURAL SURFACES AND DO NOT INCLUDE FINISHES EXCEPT WHERE OTHERWISE STATED.
 4. THE ARCHITECT IS TO BE NOTIFIED OF ANY DISCREPANCIES BETWEEN THIS DRAWING AND ANY OTHER DRAWING OR CONSTRUCTION DOCUMENTS INCLUDING THOSE ISSUED BY CONSULTANTS AND NOMINATED SUB-CONTRACTORS BEFORE COMMENCING WORK.
 5. MINIMUM STRENGTH POB CONCRETE 21Mpa

ISSUED FOR
MEASUREMENT
PURPOSES

A **ISSUED FOR STAGE 3 COORDINATION** 07.03.2022

REV. DESCRIPTION DATE

CLIENT



**SOUTHERN AFRICAN
DEVELOPMENT COMMUNITY**

JOB TITLE
**SADC STANDBY FORCE REGIONAL
LOGISTICS DEPOT, AT RASESA,
GABORONE, BOTSWANA.**

DWG TITLE
**INTERNAL WALL TYPE
DRAWINGS**

SCALE **AS SHOWN** JOB No. **G649**
DATE **MARCH 2022** DRAWN BY **KT**
REV. **A** CHECKED BY **AM**

Project Team:
Architect **FMA Architects**
Quantity Surveyor **Turner & Townsend (Pty) Ltd.**
Electrical Engineers **G4 Consulting Engineers (Pty) Ltd.**
Mechanical Engineers **G4 Consulting Engineers (Pty) Ltd.**
Civil Engineers **Botswana Bureau Botswana (Pty) Ltd.**
Structural Engineers **Botswana Bureau Botswana (Pty) Ltd.**

FMA **FMA ARCHITECTS (PTY) LTD.**
P.O. BOX 201504 BONTLENG
GABORONE, BOTSWANA.
TEL: 3959812/3 FAX: 3959814
E-MAIL: fmagabs@info.bw

DRWG. No. **SADC/ARCH/2/022/1-407**